











Source: Esri, DigitalGlobe, GeoEye, Earthstar Geographics, CNES/Airbus DS, USDA, USGS, AeroGRID, IGN, and the GIS User Community

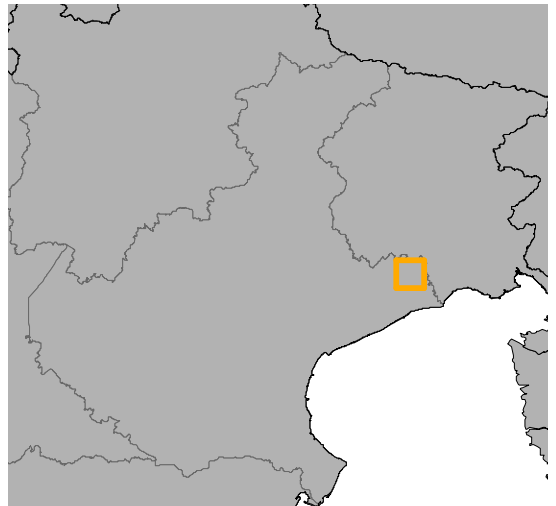
ZIGNAGO VETRO - Stabilimento di Fossalta di Portogruaro (VE)

Legenda

-  Confine dello stabilimento
-  Dominio di simulazione
-  Ambiti residenziali
-  Recettori sensibili

Ricadute ($\mu\text{g}/\text{m}^3$)

-  < 1.0 (5% del valore limite)
-  $1.0 - 1.9$
-  $1.9 - 2.8$
-  $2.8 - 3.7$
-  $3.7 - 4.6$
-  $4.6 - 5.3$







Stabilimento di Fossalta di Portogruaro (VE)

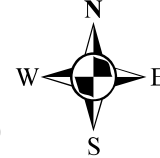
Stima degli impatti delle emissioni in atmosfera

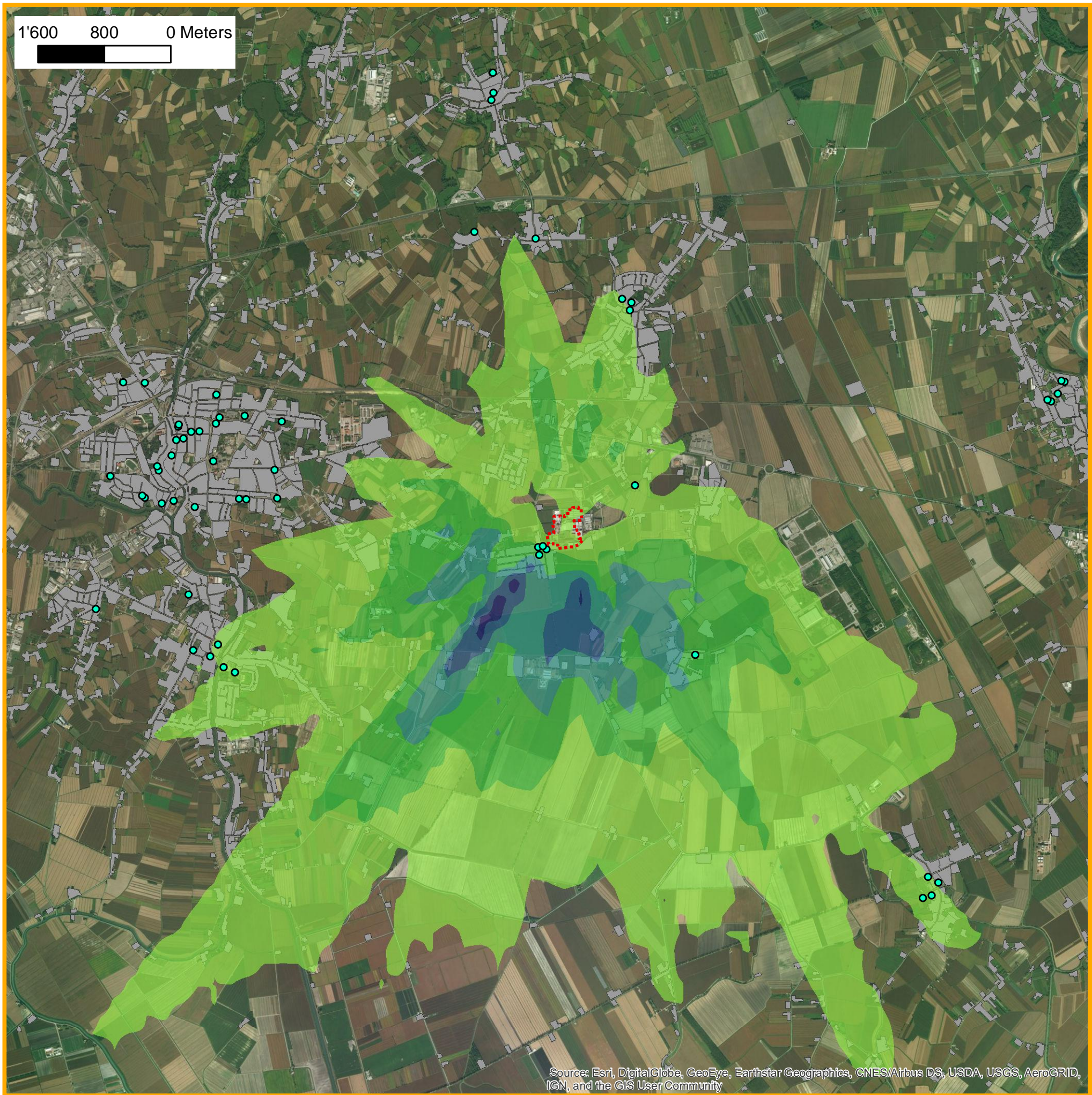
Inquinante: SO₂	Valore limite: 20 $\mu\text{g}/\text{m}^3$
Periodo di mediazione: anno	Scenario: Ante operam

Tavola_01

_Novembre 2017







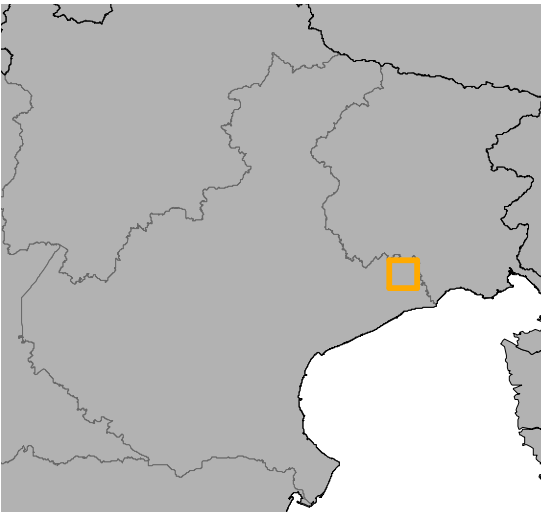
ZIGNAGO VETRO - Stabilimento di Fossalta di Portogruaro (VE)

Legenda

- Confine dello stabilimento
- Dominio di simulazione
- Ambiti residenziali
- Recettori sensibili

Ricadute ($\mu\text{g}/\text{m}^3$)

- < 6.25 (5% del valore limite)
- 6.25 - 9.75
- 9.75 - 13.25
- 13.25 - 16.75
- 16.75 - 20.25
- 20.25 - 23.35



Zignago Vetro

AECOM

Stabilimento di Fossalta di Portogruaro (VE)

Stima degli impatti delle emissioni in atmosfera

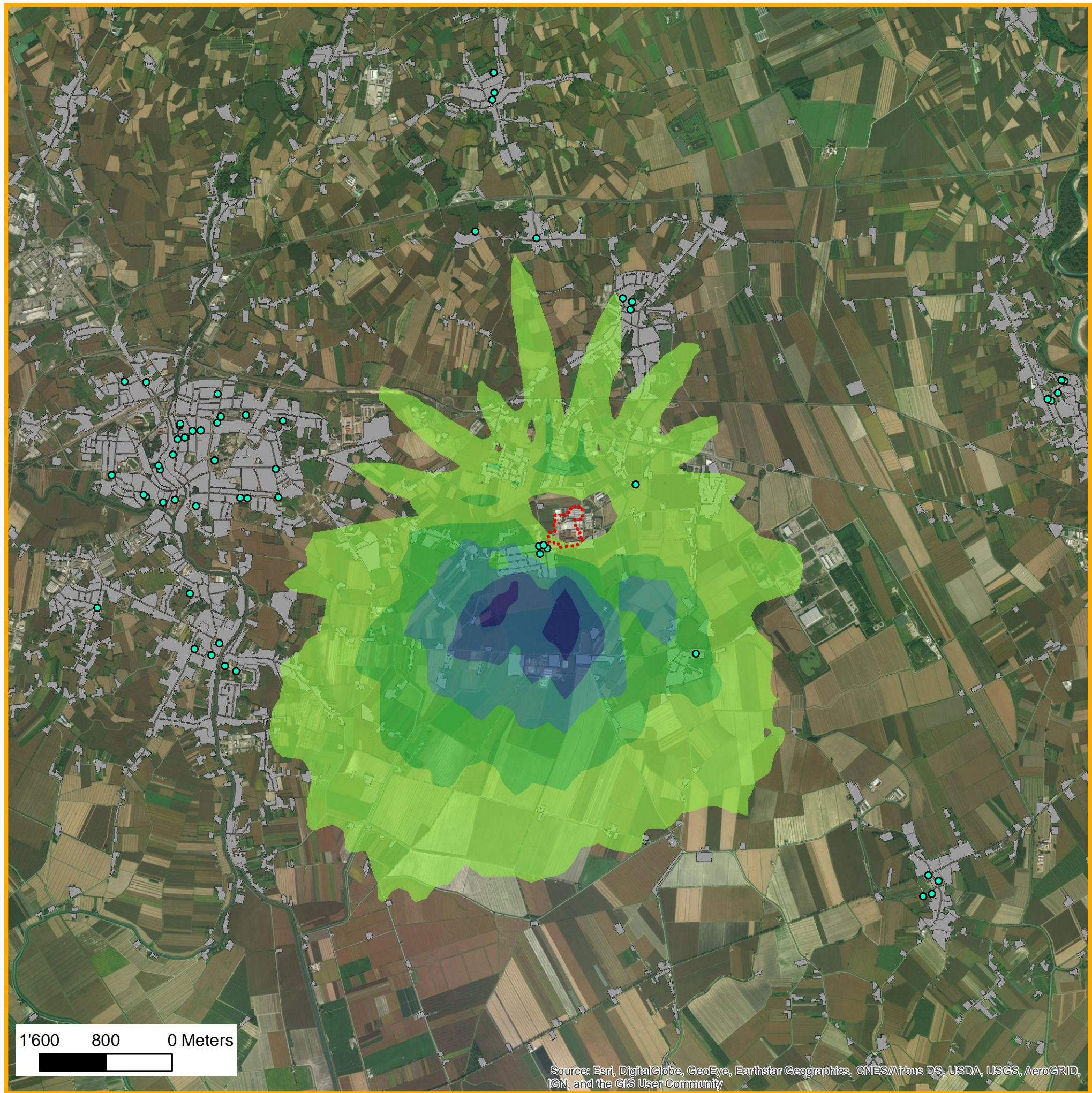
Inquinante: SO₂	Valore limite: 125 $\mu\text{g}/\text{m}^3$
Periodo di mediazione: giorno	Scenario: Ante operam

Tavola_02

_Novembre 2017





TerrAria s.r.l.




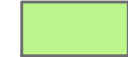






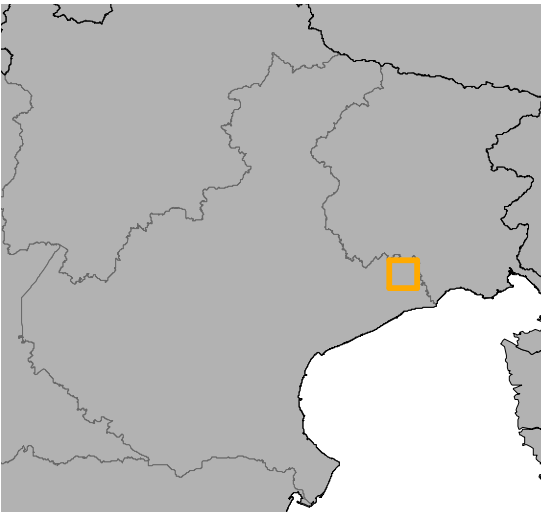
ZIGNAGO VETRO - Stabilimento di Fossalta di Portogruaro (VE)

Legenda

-  Confine dello stabilimento
-  Dominio di simulazione
-  Ambiti residenziali
-  Recettori sensibili

Ricadute ($\mu\text{g}/\text{m}^3$)

-  < 35 (10% del valore limite)
-  35 - 51
-  51 - 67
-  67 - 83
-  83 - 99
-  99 - 115







Stabilimento di Fossalta di Portogruaro (VE)

Stima degli impatti delle emissioni in atmosfera

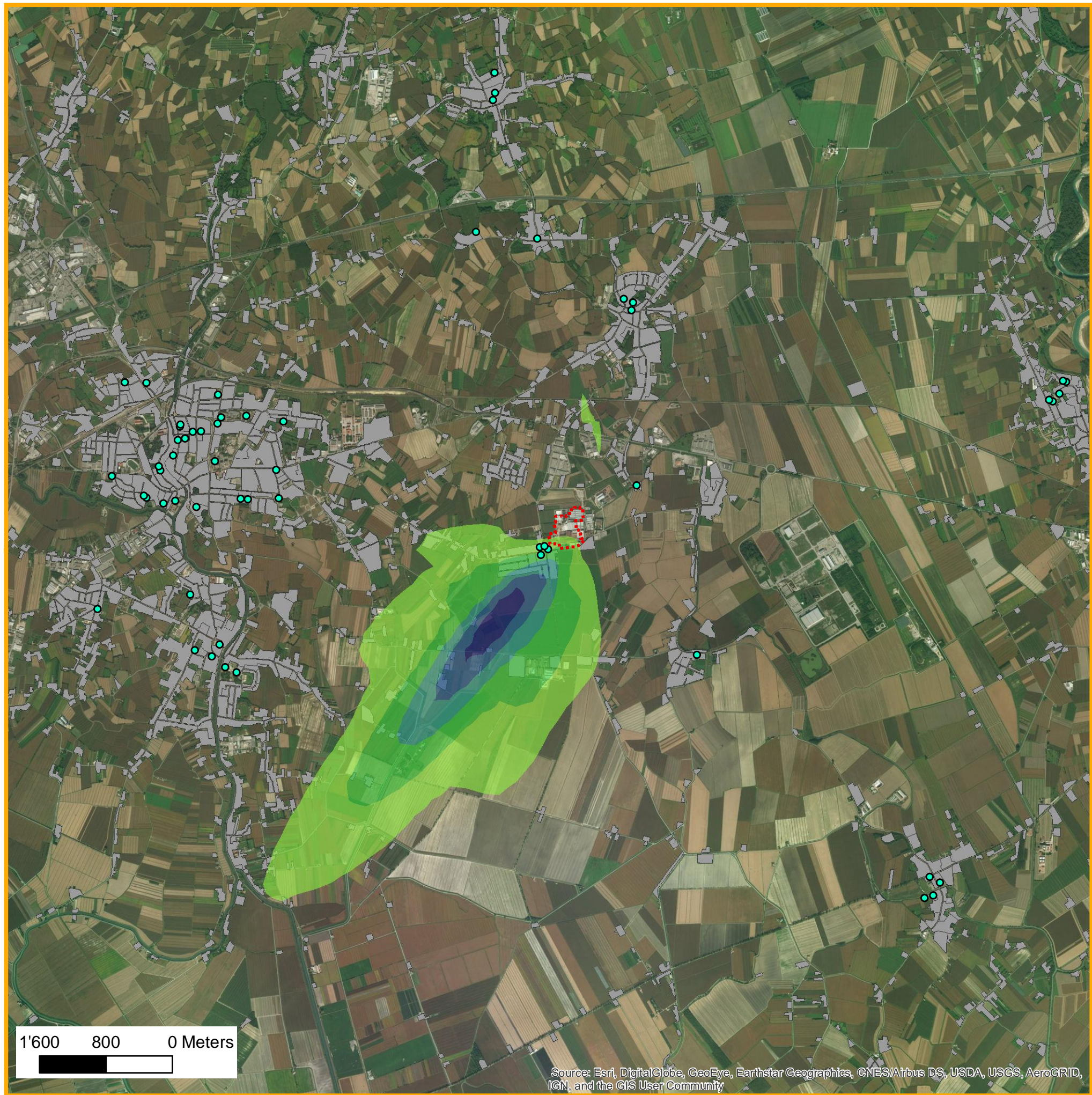
Inquinante: SO₂	Valore limite: 350 $\mu\text{g}/\text{m}^3$
Periodo di mediazione: ora	Scenario: Ante operam

Tavola_03

_Novembre 2017







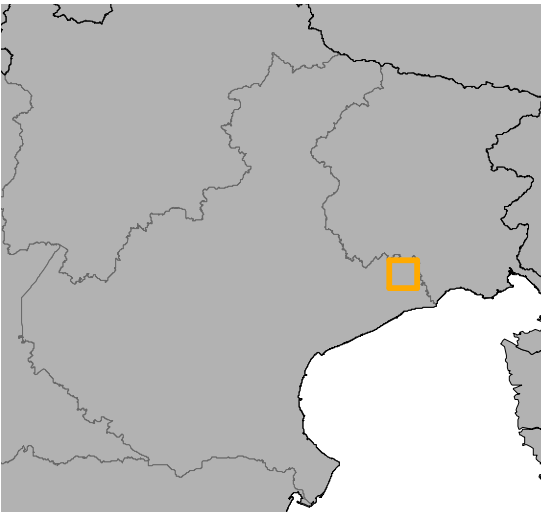
ZIGNAGO VETRO - Stabilimento di Fossalta di Portogruaro (VE)

Legenda

- Confine dello stabilimento
- Dominio di simulazione
- Ambiti residenziali
- Recettori sensibili

Ricadute ($\mu\text{g}/\text{m}^3$)

- < 2.0 (5% del valore limite)
- 2.0 - 2.7
- 2.7 - 3.4
- 3.4 - 4.1
- 4.1 - 4.8
- 4.8 - 5.5



Zignago Vetro

AECOM

Stabilimento di Fossalta di Portogruaro (VE)

Stima degli impatti delle emissioni in atmosfera

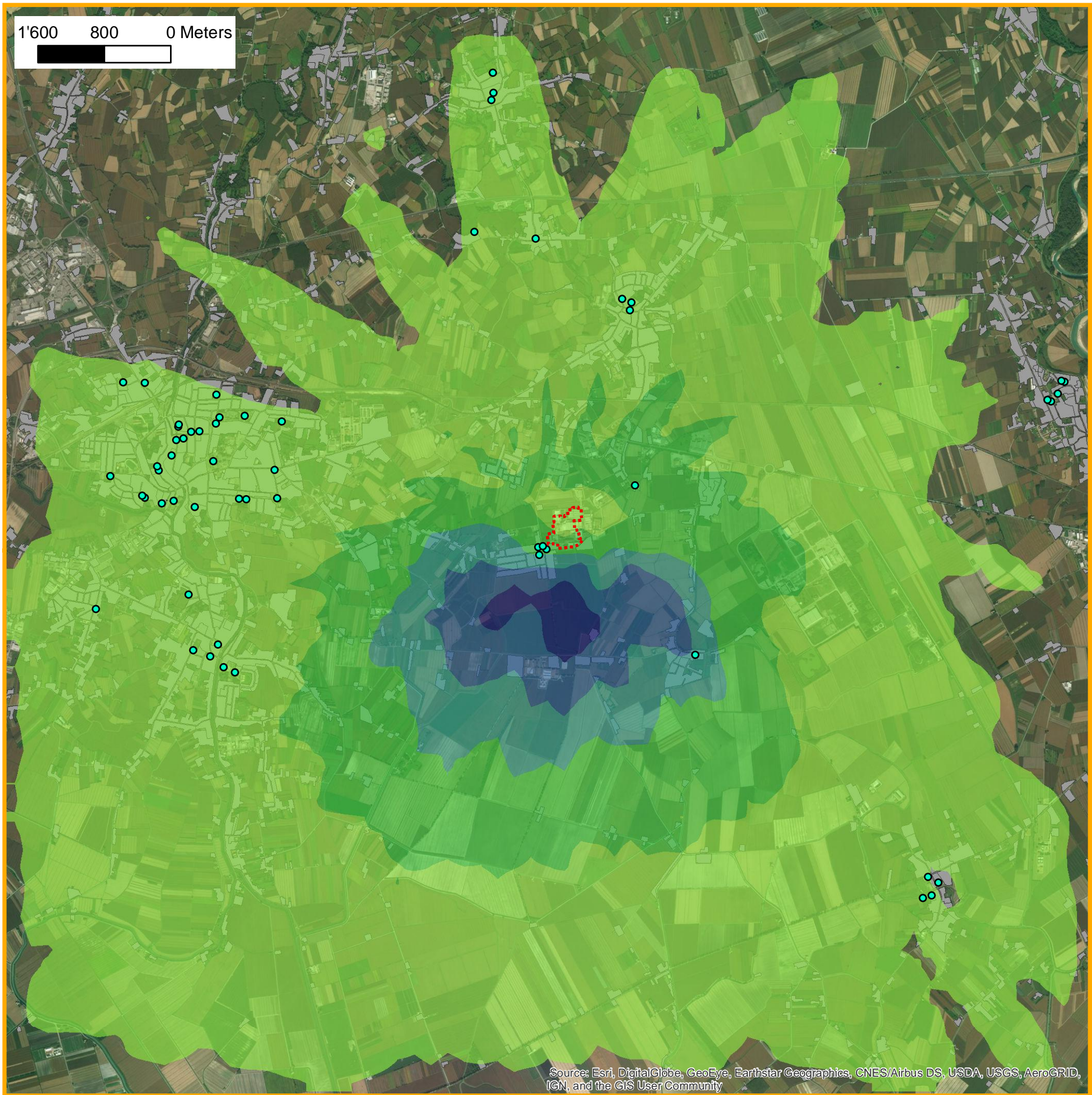
Inquinante: NO₂	Valore limite: 40 $\mu\text{g}/\text{m}^3$
Periodo di mediazione: anno	Scenario: Ante operam

Tavola_04

_Novembre 2017

TerrAria s.r.l.





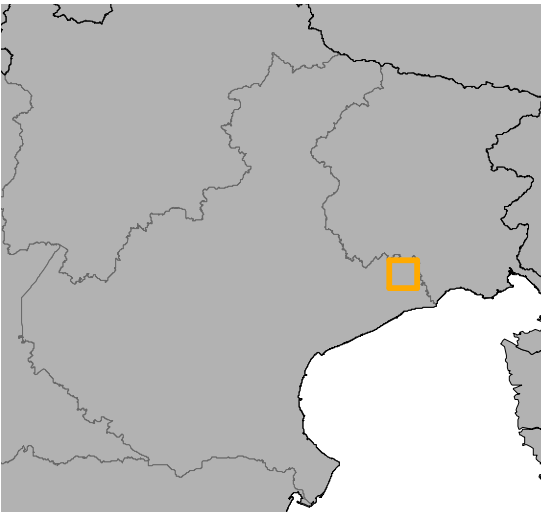
ZIGNAGO VETRO - Stabilimento di Fossalta di Portogruaro (VE)

Legenda

- Confine dello stabilimento
- Dominio di simulazione
- Ambiti residenziali
- Recettori sensibili

Ricadute ($\mu\text{g}/\text{m}^3$)

- < 20 (10% del valore limite)
- 20 - 41
- 41 - 62
- 62 - 83
- 83 - 104
- 104 - 124



Zignago Vetro

AECOM

Stabilimento di Fossalta di Portogruaro (VE)

Stima degli impatti delle emissioni in atmosfera

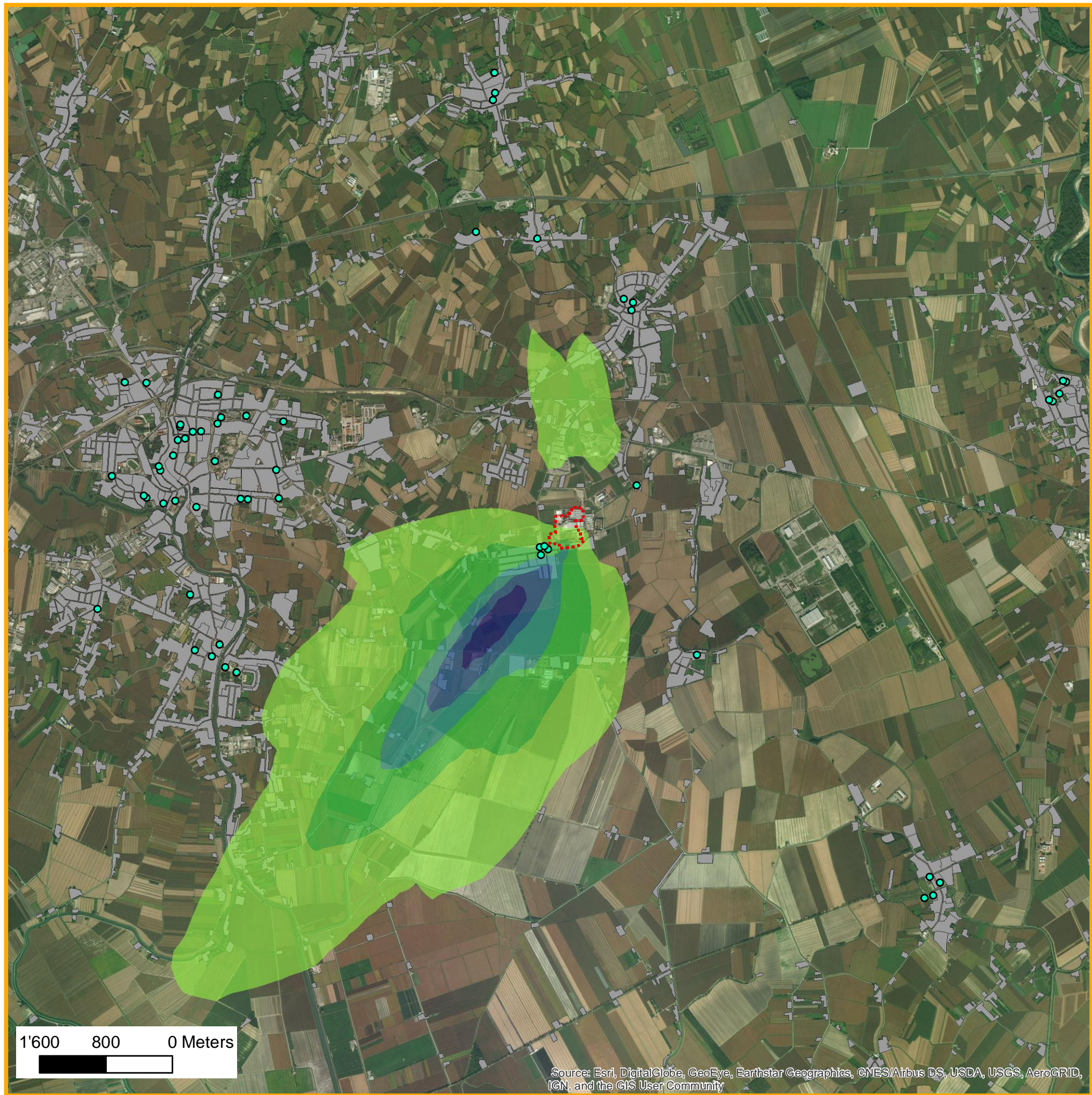
Inquinante: NO₂	Valore limite: 200 $\mu\text{g}/\text{m}^3$
Periodo di mediazione: ora	Scenario: Ante operam

Tavola_05

_Novembre 2017





TerrAria s.r.l.








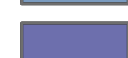


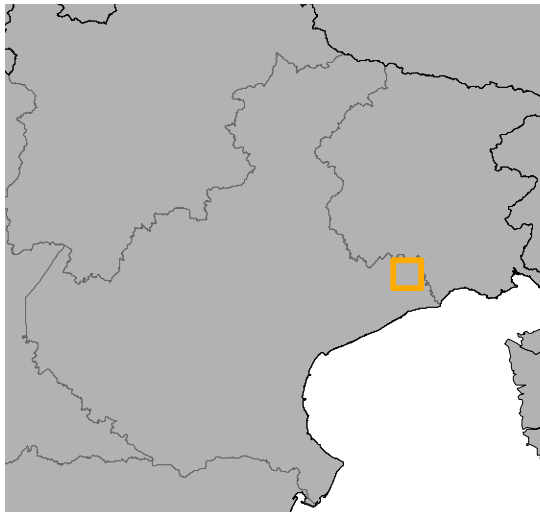
ZIGNAGO VETRO - Stabilimento di Fossalta di Portogruaro (VE)

Legenda

-  Confine dello stabilimento
-  Dominio di simulazione
-  Ambiti residenziali
-  Recettori sensibili

Ricadute ($\mu\text{g}/\text{m}^3$)

-  < 1.5 (5% del valore limite)
-  1.5 - 2.3
-  2.3 - 3.1
-  3.1 - 3.9
-  3.9 - 4.7
-  4.7 - 5.5



Zignago Vetro

AECOM

Stabilimento di Fossalta di Portogruaro (VE)
Stima degli impatti delle emissioni in atmosfera

Inquinante: **NO_x**

Valore limite: **30 $\mu\text{g}/\text{m}^3$**

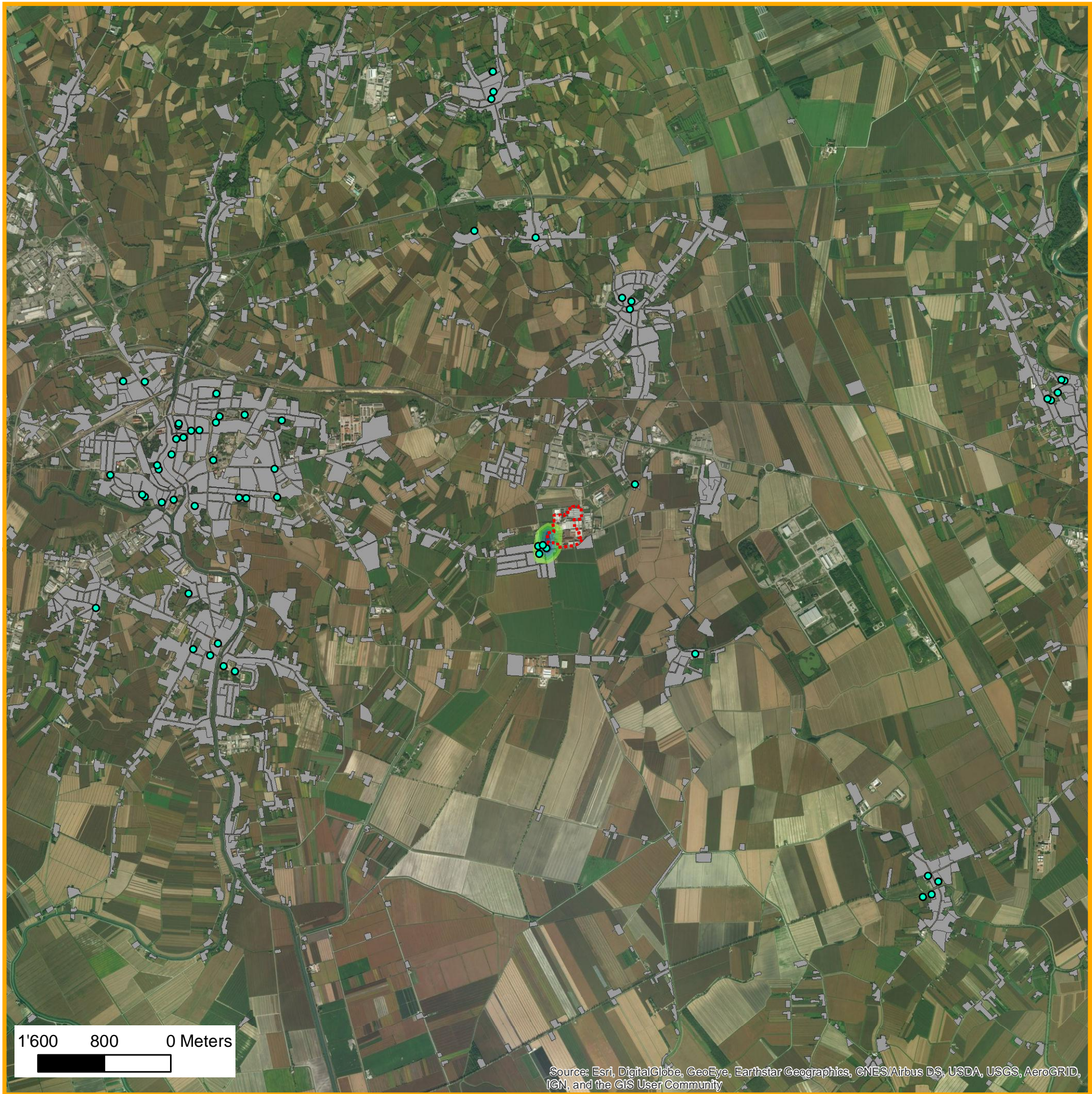
Periodo di mediazione:
anno

Scenario:
Ante operam

Tavola_06





_Novembre 2017

 TerrAria s.r.l.









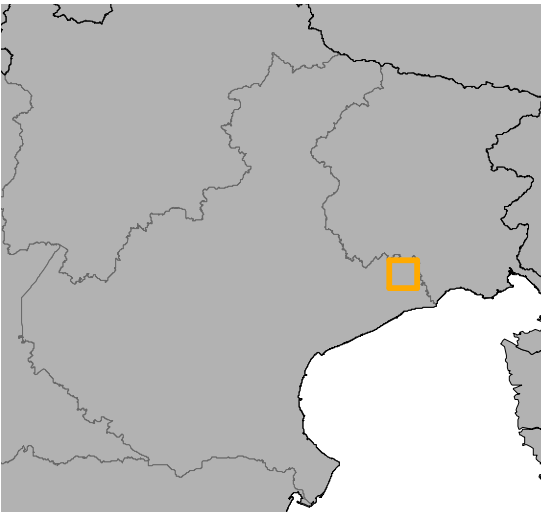
ZIGNAGO VETRO - Stabilimento di Fossalta di Portogruaro (VE)

Legenda

-  Confine dello stabilimento
-  Dominio di simulazione
-  Ambiti residenziali
-  Recettori sensibili

Ricadute ($\mu\text{g}/\text{m}^3$)

-  < 2.00 (5% del valore limite)
-  $2.00 - 2.40$
-  $2.40 - 2.80$
-  $2.80 - 3.20$
-  $3.20 - 3.60$
-  $3.60 - 3.79$



Zignago Vetro





Stabilimento di Fossalta di Portogruaro (VE)

Stima degli impatti delle emissioni in atmosfera

Inquinante: PM₁₀	Valore limite: 40 $\mu\text{g}/\text{m}^3$
Periodo di mediazione: anno	Scenario: Ante operam

Tavola_07





_Novembre 2017

 TerrAria s.r.l.






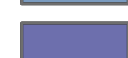


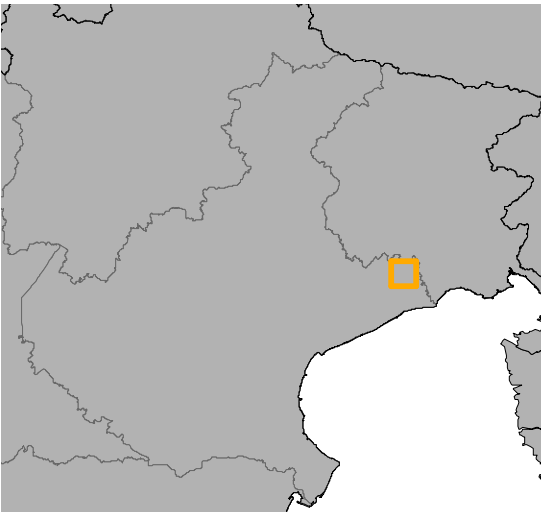
ZIGNAGO VETRO - Stabilimento di Fossalta di Portogruaro (VE)

Legenda

-  Confine dello stabilimento
-  Dominio di simulazione
-  Ambiti residenziali
-  Recettori sensibili

Ricadute ($\mu\text{g}/\text{m}^3$)

-  < 2.00 (5% del valore limite)
-  $2.00 - 2.40$
-  $2.40 - 2.80$
-  $2.80 - 3.20$
-  $3.20 - 3.60$
-  $3.60 - 3.79$



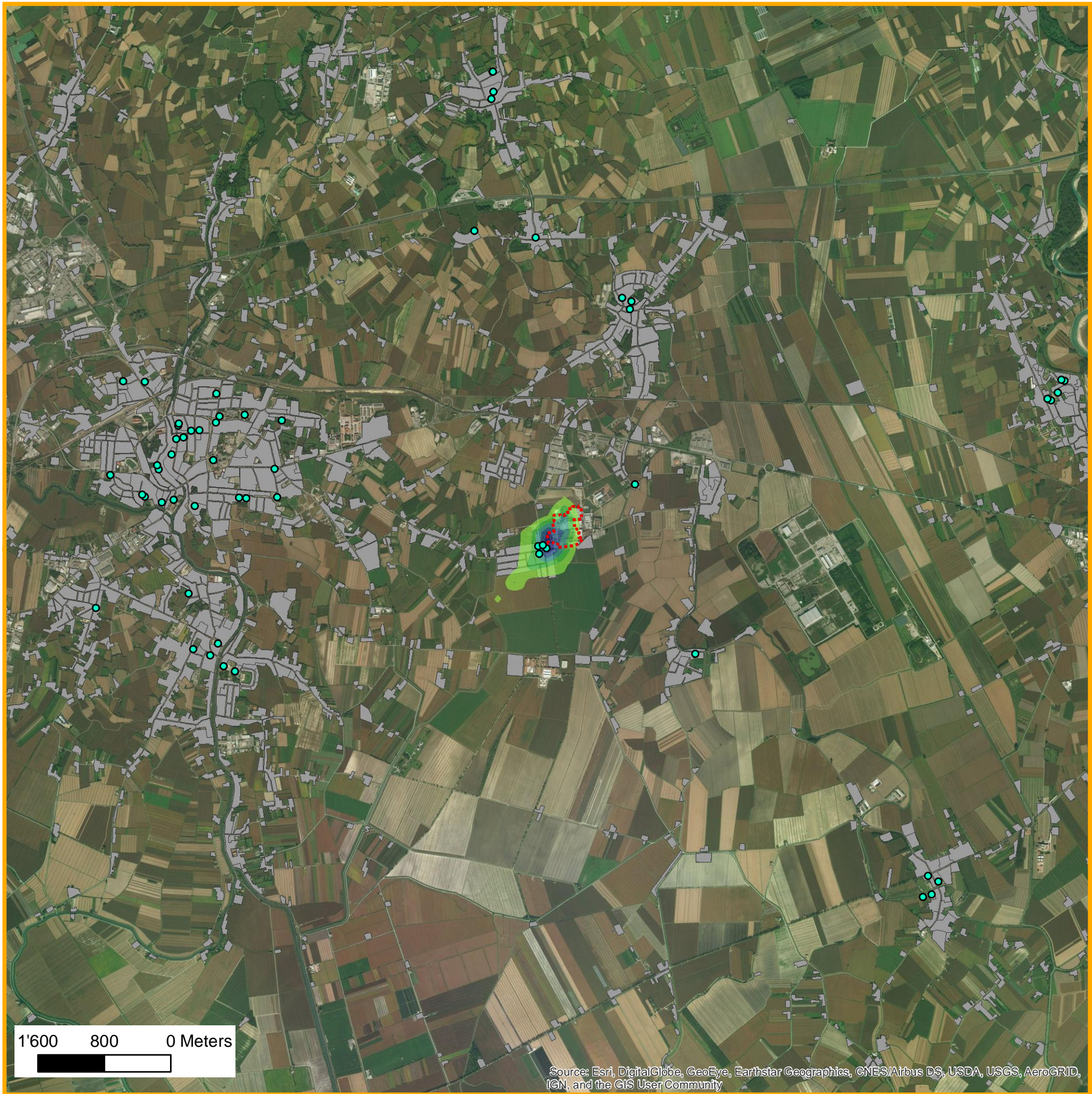


Stabilimento di Fossalta di Portogruaro (VE)
Stima degli impatti delle emissioni in atmosfera

Inquinante: PM₁₀	Valore limite: 40 $\mu\text{g}/\text{m}^3$
Periodo di mediazione: anno	Scenario: Ante operam





Tavola_07 bis

_Novembre 2017






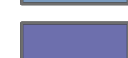


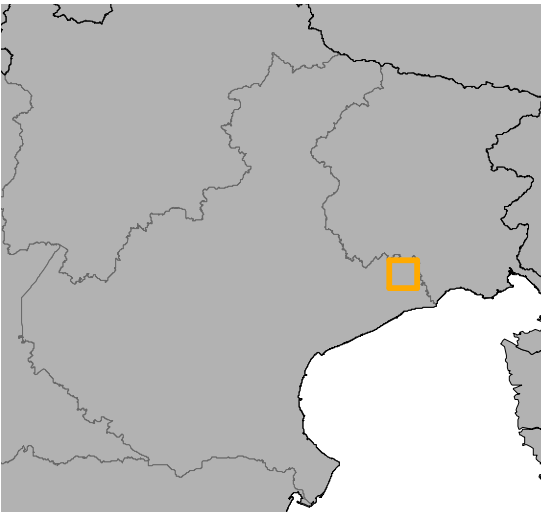
ZIGNAGO VETRO - Stabilimento di Fossalta di Portogruaro (VE)

Legenda

-  Confine dello stabilimento
-  Dominio di simulazione
-  Ambiti residenziali
-  Recettori sensibili

Ricadute ($\mu\text{g}/\text{m}^3$)

-  < 2.5 (5% del valore limite)
-  2.5 - 3.5
-  3.5 - 4.5
-  4.5 - 5.5
-  5.5 - 6.5
-  6.5 - 7.7







Stabilimento di Fossalta di Portogruaro (VE)

Stima degli impatti delle emissioni in atmosfera

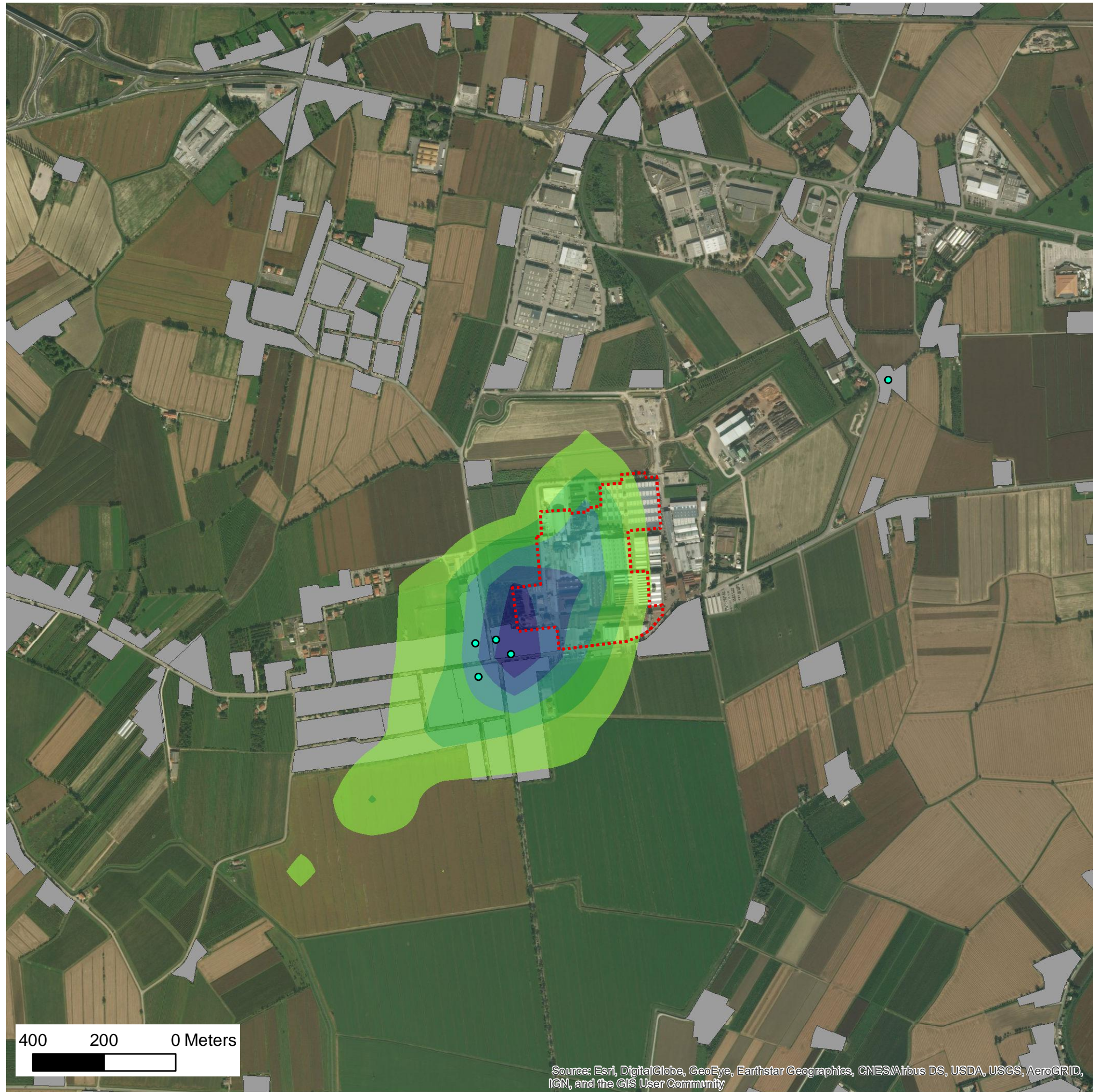
Inquinante: PM₁₀	Valore limite: 50 $\mu\text{g}/\text{m}^3$
Periodo di mediazione: giorno	Scenario: Ante operam

Tavola_08

_Novembre 2017







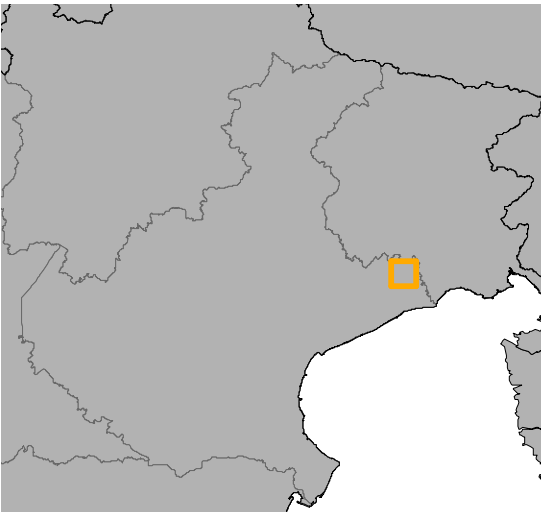
ZIGNAGO VETRO - Stabilimento di Fossalta di Portogruaro (VE)

Legenda

- Confine dello stabilimento
- Dominio di simulazione
- Ambiti residenziali
- Recettori sensibili

Ricadute ($\mu\text{g}/\text{m}^3$)

- < 2.5 (5% del valore limite)
- 2.5 - 3.5
- 3.5 - 4.5
- 4.5 - 5.5
- 5.5 - 6.5
- 6.5 - 7.7



Zignago Vetro

AECOM

Stabilimento di Fossalta di Portogruaro (VE)

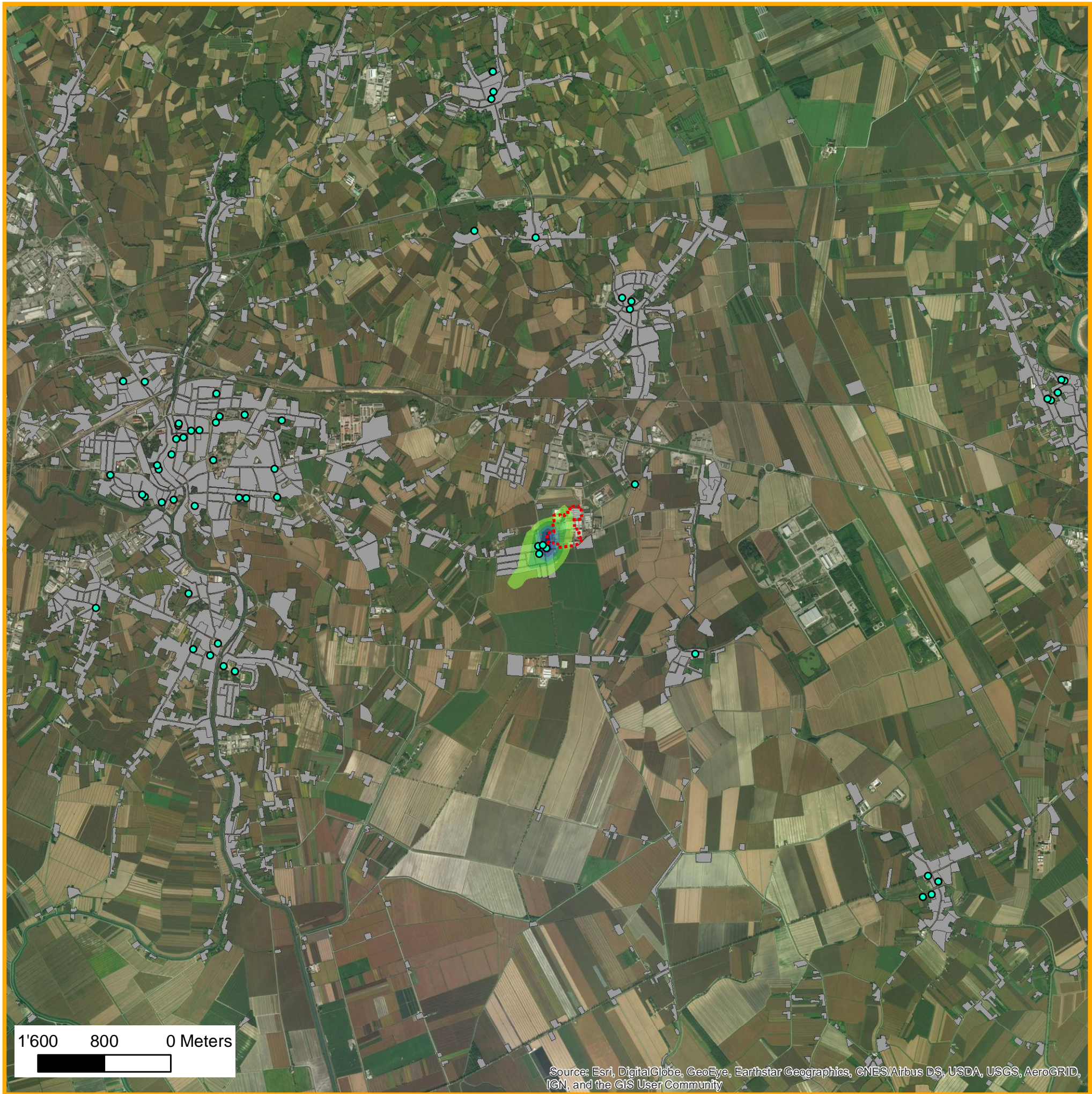
Stima degli impatti delle emissioni in atmosfera

Inquinante: PM₁₀	Valore limite: 50 $\mu\text{g}/\text{m}^3$
Periodo di mediazione: giorno	Scenario: Ante operam

Tavola_08 bis

_Novembre 2017

TerrAria s.r.l.



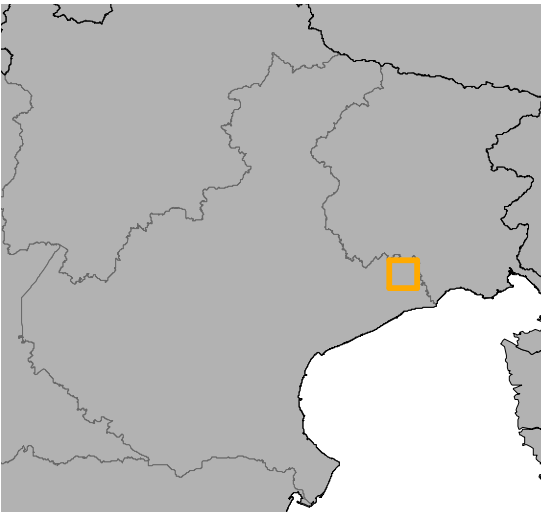
ZIGNAGO VETRO - Stabilimento di Fossalta di Portogruaro (VE)

Legenda

- Confine dello stabilimento
- Dominio di simulazione
- Ambiti residenziali
- Recettori sensibili

Ricadute ($\mu\text{g}/\text{m}^3$)

- < 1.25 (5% del valore limite)
- 1.25 - 1.75
- 1.75 - 2.25
- 2.25 - 2.75
- 2.75 - 3.25
- 3.25 - 3.78



Zignago Vetro

AECOM

Stabilimento di Fossalta di Portogruaro (VE)

Stima degli impatti delle emissioni in atmosfera

Inquinante: PM_{2.5}	Valore limite: 25 $\mu\text{g}/\text{m}^3$
Periodo di mediazione: anno	Scenario: Ante operam

Tavola_09

_Novembre 2017

TerrAria s.r.l.





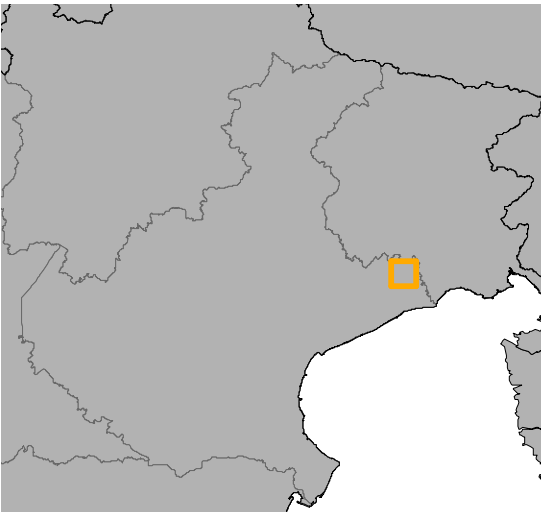
ZIGNAGO VETRO - Stabilimento di Fossalta di Portogruaro (VE)

Legenda

- Confine dello stabilimento
- Dominio di simulazione
- Ambiti residenziali
- Recettori sensibili

Ricadute ($\mu\text{g}/\text{m}^3$)

- < 1.25 (5% del valore limite)
- 1.25 - 1.75
- 1.75 - 2.25
- 2.25 - 2.75
- 2.75 - 3.25
- 3.25 - 3.78



Zignago Vetro

AECOM

Stabilimento di Fossalta di Portogruaro (VE)

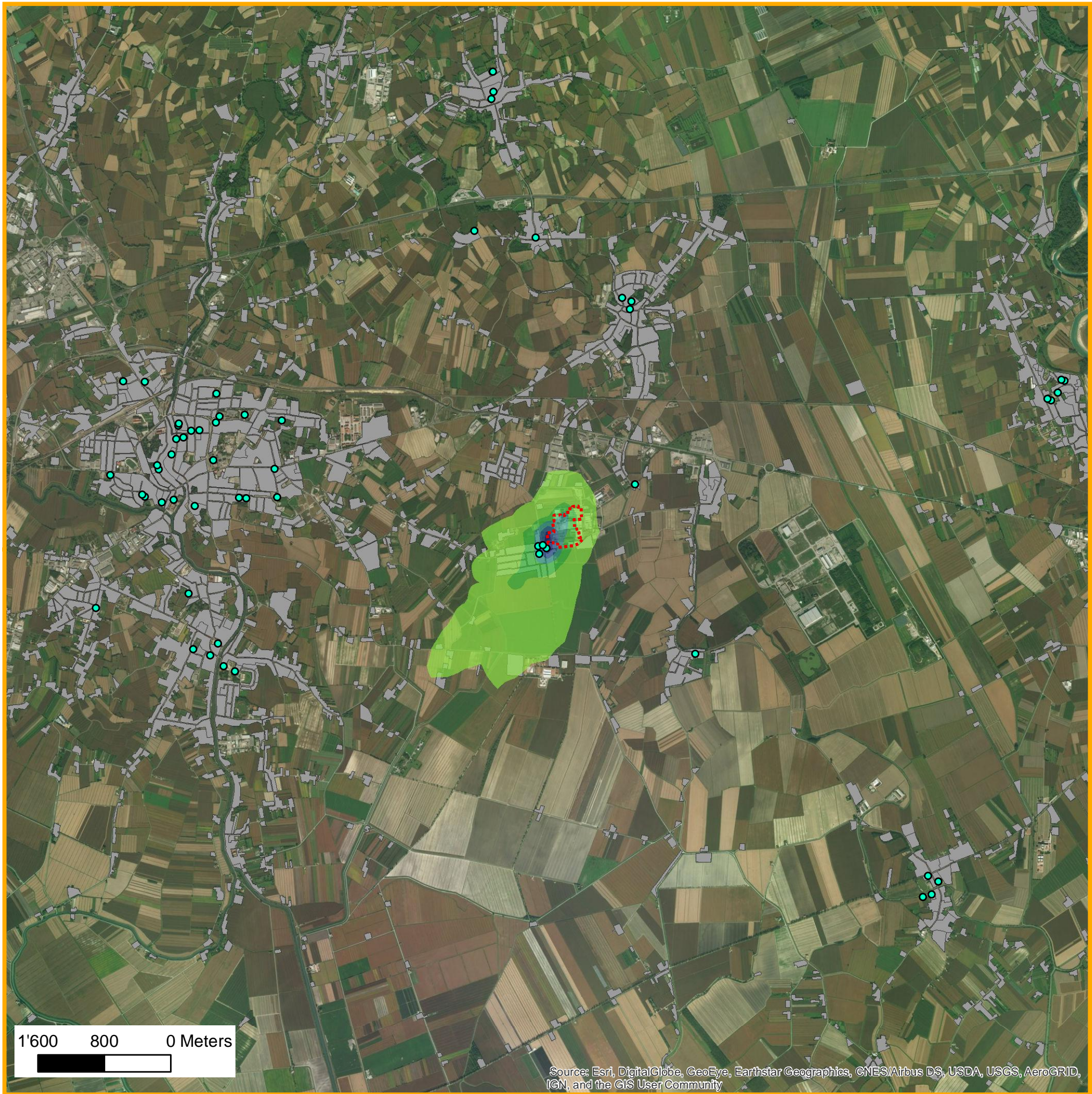
Stima degli impatti delle emissioni in atmosfera

Inquinante: PM_{2.5}	Valore limite: 25 $\mu\text{g}/\text{m}^3$
Periodo di mediazione: anno	Scenario: Ante operam

Tavola_09 bis





_Novembre 2017

TerrAria s.r.l.









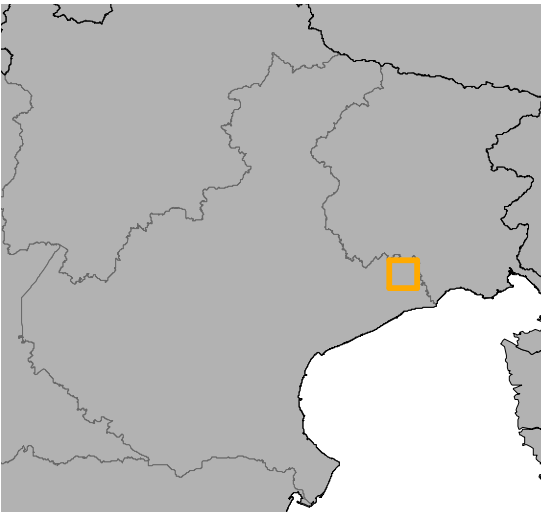
ZIGNAGO VETRO - Stabilimento di Fossalta di Portogruaro (VE)

Legenda

-  Confine dello stabilimento
-  Dominio di simulazione
-  Ambiti residenziali
-  Recettori sensibili

Ricadute (ng/m³)

-  < 1.0 (5% del valore limite)
-  1.0 - 3.4
-  3.4 - 5.8
-  5.8 - 8.2
-  8.2 - 10.6
-  10.6 - 13.1







Stabilimento di Fossalta di Portogruaro (VE)

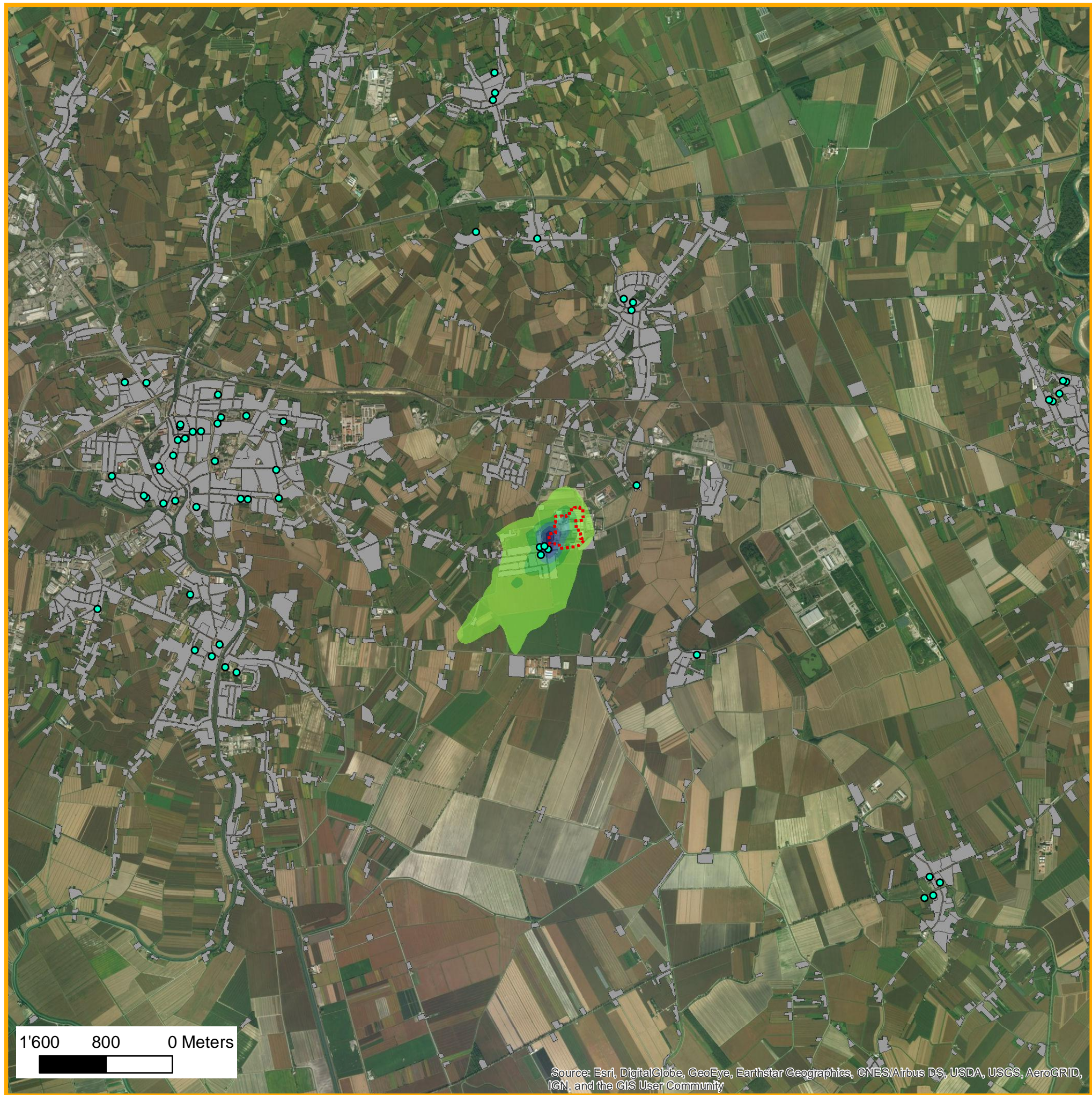
Stima degli impatti delle emissioni in atmosfera

Inquinante: Ni	Valore limite: 20 ng/m³
Periodo di mediazione: anno	Scenario: Ante operam

Tavola_10





_Novembre 2017








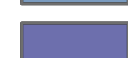


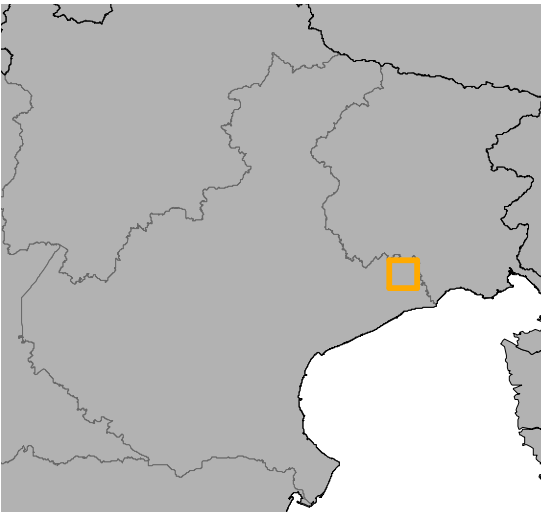
ZIGNAGO VETRO - Stabilimento di Fossalta di Portogruaro (VE)

Legenda

-  Confine dello stabilimento
-  Dominio di simulazione
-  Ambiti residenziali
-  Recettori sensibili

Ricadute (ng/m³)

-  < 0.25 (5% del valore limite)
-  0.25 - 0.65
-  0.65 - 1.05
-  1.05 - 1.45
-  1.45 - 1.85
-  1.85 - 2.18







Stabilimento di Fossalta di Portogruaro (VE)

Stima degli impatti delle emissioni in atmosfera

Inquinante: Cd	Valore limite: 5 ng/m ³
Periodo di mediazione: anno	Scenario: Ante operam

Tavola_11

_Novembre 2017



